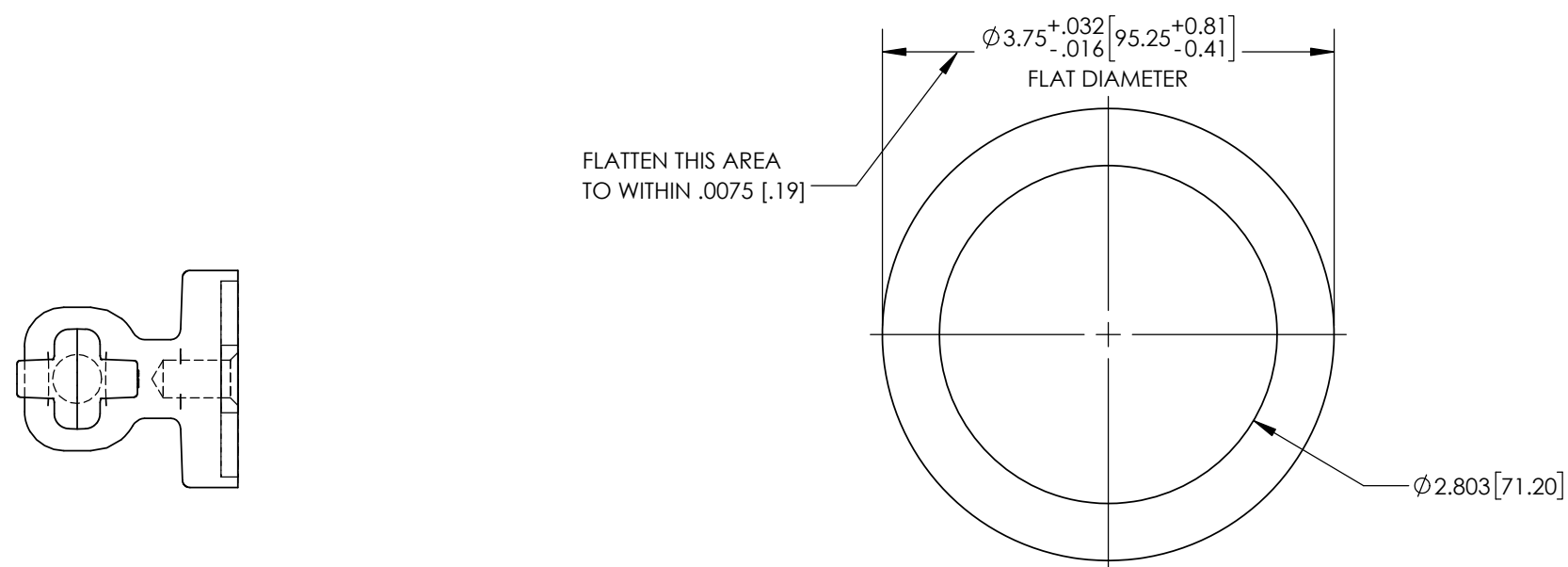
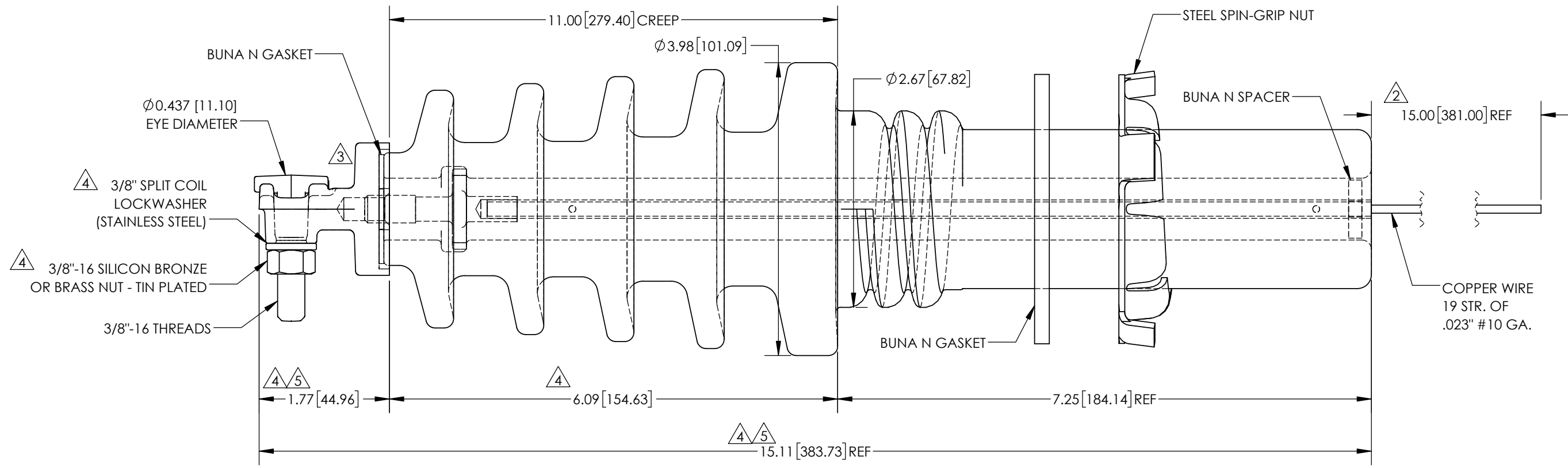


REVISIONS					
REV	DATE	ECN #	DESCRIPTION	BY	APPROVED
1	8/13/1996		TOLERANCE WAS ±.003"	TLH	JFS
2	9/30/1996		WAS 4.75"	TLH	JFS
3	10/23/1996		CHANGED CAP	TLH	JFS
4	1/6/2000		REDREW PORCELAIN AND LEAD; EDITED DIMS, ADDED NOTES	CJT	LHE
5	10/17/2000	HJ00-003	ADDED .100" TO CAP AND EDITED DIMS.	CJT	LHE
6	5/24/2023	HJ23-099	SOLIDWORKS REDRAW; ADDED TABLE	OAD	JG



**H.V. TANK HOLE DIMENSIONS**



6 TECHNICAL CHARACTERISTICS			
SPECIFICATIONS	VALUE	COMPONENTS	MATERIAL
NOMINAL SYSTEM VOLTAGE .....	15kV	INSULATOR .....	WET PROCESS ELECTRICAL PORCELAIN
CURRENT RATING .....	50A	CONDUCTOR .....	COPPER WIRE #10 GA
BASIC IMPULSE LEVEL (BIL) .....	95kV	TERMINAL (CAST) .....	TIN PLATED
RATED FREQUENCY WITHSTAND (DRY) - 60s ....	35kV	GASKETS/SPACER .....	NITRILE BUNA N
RATED FREQUENCY WITHSTAND (WET) - 10s ....	30kV	SPIN GRIP NUT .....	STEEL
CREEP DISTANCE		EYE BOLT .....	TIN PLATED
TOP .....	11.0" [279mm]	LOCKWASHER .....	STAINLESS STEEL
STRIKE DISTANCE		NUT .....	TIN PLATED
TOP .....	6.0" [152mm]		
CANTILEVER OPERATING LOAD .....	112lbf [500N]	<b>NOTES:</b>	
CANTILEVER TEST LOAD .....	224lbf [1000N]	1. PORCELAIN TOLERANCE ±3% WITH NOTHING LESS THAN ±.03", UNLESS OTHERWISE NOTED.	
PORCELAIN COLOR .....	GREY		
APPROXIMATE WEIGHT .....	5.71lb [2.59kg]		

	<b>TOLERANCES</b> (EXCEPT AS NOTED)		<b>THE H-J FAMILY OF COMPANIES</b> 3010 HIGH RIDGE BLVD. HIGH RIDGE, MO. 63049 USA PHONE 1-636-677-3421 FAX 1-636-677-7808	
	DECIMAL		<b>15kV H.V. BUSHING ASSEMBLY</b>	
	FRACTIONAL		MATERIAL SEE TABLE	
	ANGULAR		± .032"/.8mm ± ± 2 Degrees	CHK'D JG    APP'D 5/24/23    DRAWING NO. AS1143-002 SCALE N.T.S.
<b>PROPRIETARY AND CONFIDENTIAL</b> THE INFORMATION CONTAINED IN THIS DRAWING IS THE SOLE PROPERTY OF THE H-J FAMILY OF COMPANIES. ANY REPRODUCTION IN PART OR AS A WHOLE WITHOUT THE WRITTEN PERMISSION OF THE H-J FAMILY OF COMPANIES IS PROHIBITED.		DRAWN BY TLH    DATE 3/22/1996		